

Waveguide Isolator

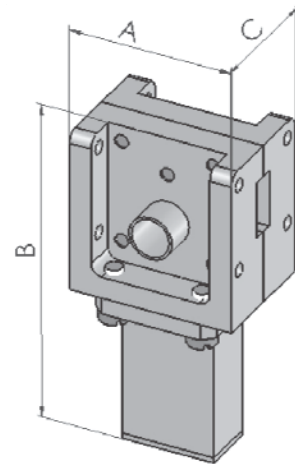
Dolph Microwave offers a standard product line of waveguide Isolator ranging from L-band, S-band.....E-band, U-band. Using standard waveguide flange, the product covers a wide frequency band and complete categories.

For more information feel free to call us and discuss your needs with one of our sales engineers.

● General Isolator Specifications

Waveguide isolator product transmission size is limited by the operating bandwidth and performance. The wider the operating bandwidth, the larger the product transmission direction size.

The size of the absorber is limited by the reflected power, operating bandwidth, and performance. The larger the reflected power, the wider the operating bandwidth, and the larger the product load direction size.



Typical Specifications

Freq Band	Bandwidth	Forward Loss (dB)	Reverse Loss (dB)	VSWR	Ave. Power
L	5%	0.20	23	1.15	2KW
	10%	0.25	21	1.17	
	20%	0.30	20	1.20	
S	5%	0.20	23	1.15	1KW
	10%	0.25	21	1.17	
	20%	0.30	20	1.20	
C	5%	0.20	23	1.15	500W
	10%	0.25	21	1.17	
	20%	0.30	20	1.20	
X	10%	0.20	23	1.15	300W
	20%	0.25	20	1.20	
Ku	10%	0.20	23	1.15	120W
	20%	0.25	20	1.20	
K	10%	0.20	23	1.15	100W
	20%	0.25	20	1.20	

Ka	5%	0.25	23	1.15	50W
	10%	0.30	20	1.20	
V	10%	0.60	17	1.35	2W
U	5%	0.60	17	1.35	2W
E	5%	0.60	17	1.35	2W

Product Specifications

Model No	Freq Range (GHz)	WG Type	Forward Loss (dB)	Reverse Loss (dB)	VSWR	Ref. Power	Size
DH-GBG9029	2.01-2.13	BJ22	0.50	20	1.5	1200W	220*417*106.4
DH-GBG9052	3.4-4.2	BJ40	0.25	20	1.2	2000W	265*138*69.85
DH-GBG9051	5.49-5.51	BJ48	0.30	25	1.12	2MW/2KW	300*210*89.9
DH-GBZ9011	5.8-6.4	BJ70	0.20	20	1.25	1200W	172.6*82.6*49.2
DH-GBP9049	13-14	BJ140	0.30	20	1.15	30W	20*34.5*33
DH-GBP9106	13-14.1	BJ120	0.30	20	1.2	100W	39*57.5*38.3
DH-GBZ9019	13.75-14.5	BJ120	0.20	23	1.15	300W	38*90*38
DH-GBP9085	14-16	BJ140	0.25	18	1.3	10W	45.72*22.86*19.05
DH-GBP9105	14.6-15.3	BJ120	0.30	20	1.2	100W	39*57.5*38.3
DH-GBP9039	15-18	BJ180	0.40	20	1.2	20W	38*86*33.3
DH-GBP9076	16.3-17.3	BJ220	0.40	18	1.3	50W	23*40*15
DH-GBG9009	16.5-17.5	BJ140	0.30	24	1.15	1500W	33*68*33
DH-GBP9078	18.5-21.6	BJ220	0.30	20	1.22	50W	38*22.4*18
DH-GBG9047A	18.8-21.2	BJ180	0.20	20	1.2	80W	30*70*23.37
DH-GBP9100	22.4-26.3	BJ260	0.30	18	1.3	30W	24*36*21.1
DH-GBG9048	22.55-23.55	BJ220	0.20	20	1.2	80W	30*70*22.4
DH-GBP9079	24.7-27.7	BJ260	0.25	21	1.2	50W	18*35*21.1
DH-GBP9102	26.5-28.5	BJ320	0.25	20	1.2	30W	20*23*19
DH-GBG9042	27.5-31	BJ320	0.25	20	1.2	50W	25*40*19.1
DH-GBG9039	29.4-31	BJ320	0.20	20	1.2	80W	21*45*19.1
DH-GBP9118	33-37	BJ320	0.30	20	1.2	20W	25*27*19.1
DH-GBH9009	43-46	BJ400	0.40	20	1.25	50W	30*44*30
DH-GBP9028	49-51	BJ500	0.30	20	1.2	10W	18*25*19.8
DH-GBH9014	50-57.38	BJ500	0.50	18	1.3	2W	15*25.5*20



FengHuiNan Road NO.34, High-Tech Zone, Xi'an, China
E-mail: sales@dolphmicrowave.com
Web: www.dolphmicrowave.com

DH-GBH9016	51-59	BJ620	0.60	20	1.3	2W	15*25.5*20
DH-GBH9007	74-76	BJ740	0.60	20	1.3	2W	15*25*20
DH-GBH9013	81-84	BJ740	0.60	18	1.35	2W	15*25.5*20
DH-GBH9018	83.2-86.2	BJ740	0.60	18	1.3	2W	15*25.6*19
DH-GBH9017	87-91	BJ900	0.70	18	1.35	2W	15*20.5*19.1
DH-GBH9006	93.9-94.1	BJ900	0.45	23	1.25	2W	15*25*21



Phone: +86 (29) 8881 0979
sales@dolphmicrowave.com - www.dolphmicrowave.com
Designed and made in China