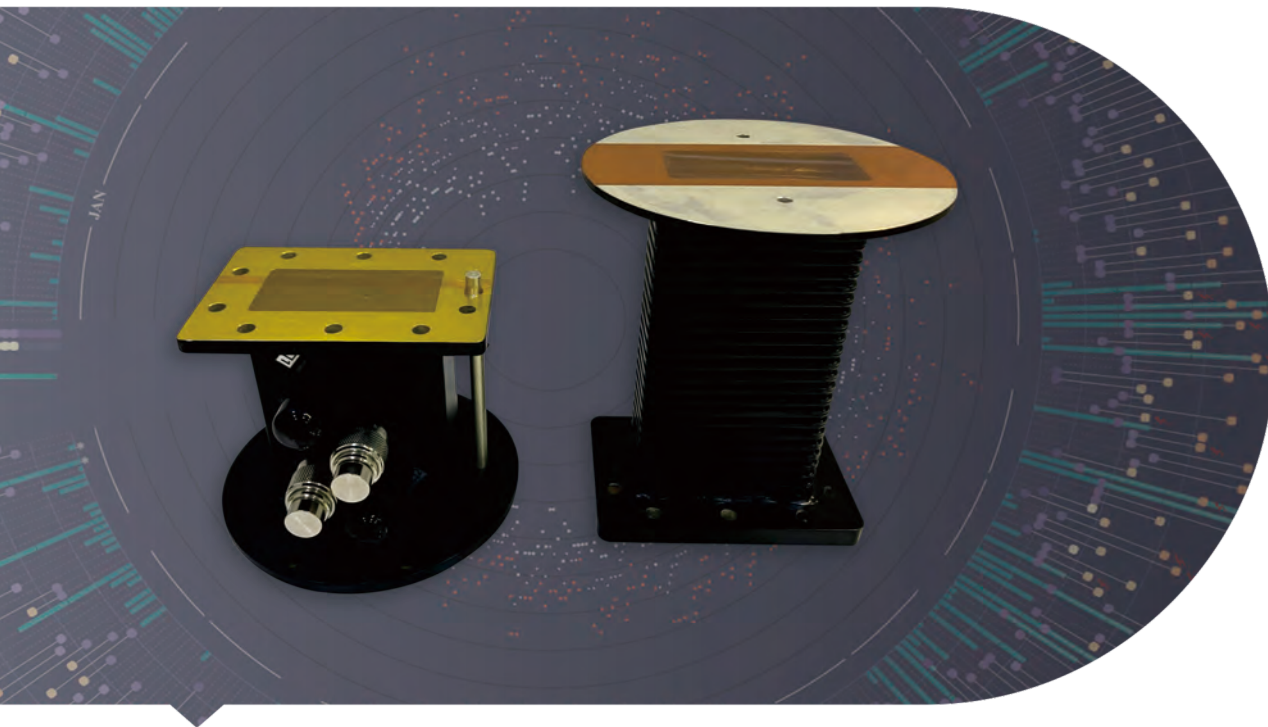


# MICROWAVE COUPLER



## → Features

- Frequency range: 915 MHz and 2450MHz
- Handling power: 6 KW, 10 KW, up to 20KW CW
- Bandwidth: 20%
- Coupling degree: 30-70dB
- Directivity: 20-25dB
- Compact structure

## → Description

Dolph Microwave Coupler is compact structure with high coupling, power handling and directivity. With or without coaxial adapter are optional. Both standard and customized can be chosen upon request.

Model	WR Type	Frequency (MHZ)	VSWR Max.	Coupling (dB)
DH-9WHC	WR975	915±50	1.1	30-70
DH-22WHC...	WR430	2450±50	1.1	30-70
DH-26WHC...	WR340	2450±50	1.1	30-70
DH-32WHC...	WR284	2450±50	1.1	30-70

Directivity (dB)	Accuracy (dB)	Freq. Sensitivity (dB)	Coupling Interface	Coupling Directional
20-25	±0.7	±1	N/SMA/TNC	Single/Dual
20-25	±0.7	±1	N/SMA/TNC	Single/Dual
20-25	±0.7	±1	N/SMA	Single/Dual
20-25	±0.7	±1	N/SMA	Single/Dual

Flange Type	Inside Finish	Body Finish	Material
Cover/Grooved	Iridite per MIL-C-5541	Anticorrosion Black Painted	Al/Brass
Cover/Grooved	Iridite per MIL-C-5541	Anticorrosion Black Painted	Al/Brass
Cover/Grooved	Iridite per MIL-C-5541	Anticorrosion Black Painted	Al/Brass
Cover/Grooved	Iridite per MIL-C-5541	Anticorrosion Black Painted	Al/Brass

## Ordering Information

### DH - 26 WHC 50 N K P A

DH	Dolph Microwave
26	WR340
WHC	Single Loop Couplers
WDHC	Dual Loop Couplers
50	Coupling 50 dB
N	Connector Type
K	Female
P	Flange Cover
M	Flange Grooved
A	Material Al