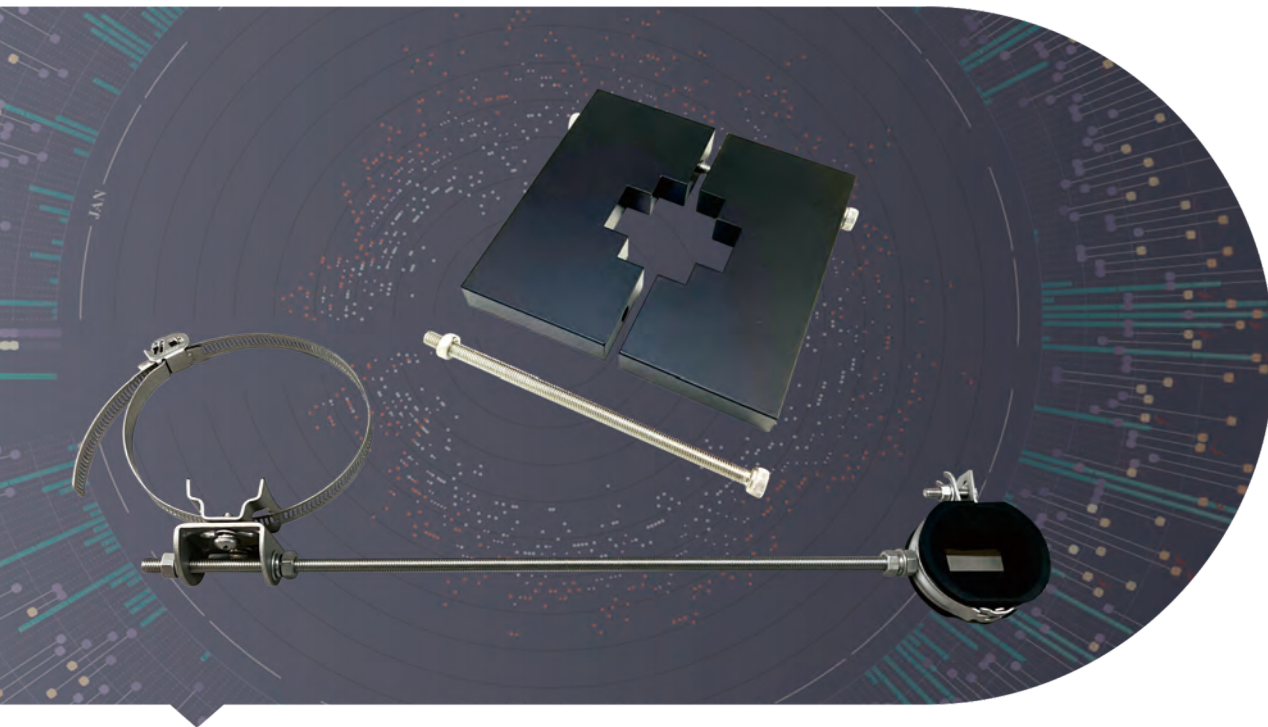


# WAVEGUIDE STANDOFF AND HANGERS



## → Features

Waveguide size: WR2300 to WR10

Type: Clamp and standoff

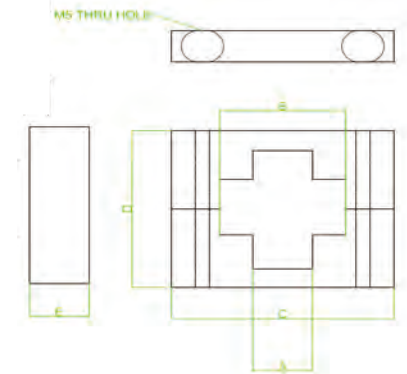
Material: Plastic

Application: Single, double, triple or quadruple waveguide

## → Description

Dolph Microwave waveguide standoff and hanger is easy for rectangular waveguide installation indoor and outdoor. Optional in single, double, triple or quadruple waveguide configurations. Both standard and customized can be chosen in mechanical configurations.

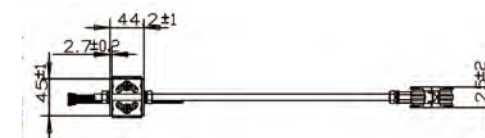
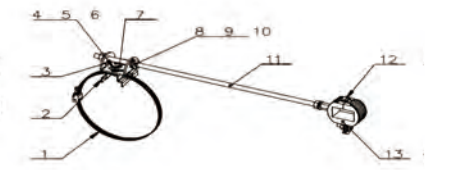
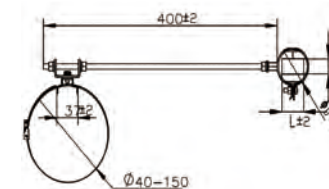
Model	WR Size	A	B	C	D	E
DH-22-831/200	WR430	58.8	113.41	171.45	171.45	12.7
DH-32-831/200	WR284	38.23	76.33	139.7	139.7	12.7
DH-40-831/200	WR229	32.46	61.29	127	127	12.7
DH-48-831/200	WR187	25.53	50.93	114.3	114.3	12.7
DH-58-831/200	WR159	23.57	43.76	101.6	101.6	12.7
DH-70-831/200	WR137	19.18	38.23	101.6	101.6	12.7
DH-84-831/200	WR112	16	31.88	31.88	31.88	12.7
DH-100-831/200	WR90	12.83	25.53	63.5	63.5	12.7
DH-120-831/200	WR75	12.2	21.72	50.8	50.8	12.7
DH-140-831/200	WR62	10.06	17.96	50.8	50.8	12.7



Model	Hoop Dia. (mm)	Rubber Part (W*L/mm)
DH-48-83010 (WR187)	90	58*32
DH-70-83010 (WR137)	62	45*25
DH-84-83010 (WR112)	50	38*22
DH-100-83010 (WR90)	50	31*19
DH-120-83010 (WR75)	38	28*17
DH-140-83010 (WR62)	38	25*15
DH-220-83010 (WR42)	38	19*12
DH-320-83010 (Wr28)	38	14*10

Material	Stainless steel 304
Operation Temperature	-20°C ~ +85°C

1	Throat hoop	40-150mm
2	Pedestal	M6
3	Swivel Bracket	45*44.2*2.7
4	M6 Flat Pad	M6
5	M6 Spring Pad	M6
6	M6 Phillips Screws	M6*12
7	Rivet	φ4
8	M8 Flat Pad	M8
9	M8 Spring Pad	M8
10	M8 Nut	M8
11	tooth bar	M8*400
12	Hoop	38-90mm
13	Rubber parts	WR187-WR28



## Ordering Information

DH - 120 - 831/200 P

DH	Dolph Microwave
120	WR75
831/200	WG Standoff and Hangers
83010	WG Clamps and Hangers
P	Material PE
A	Material Al
S	Material Stainless steel