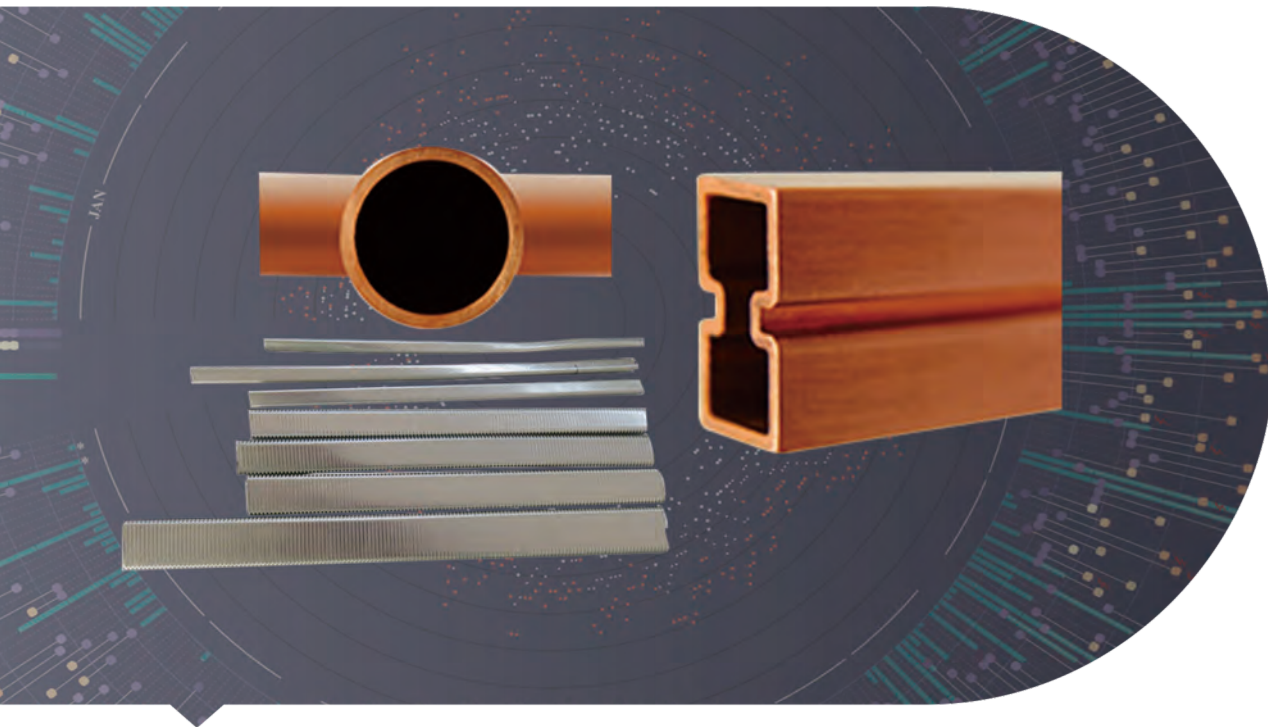


WAVEGUIDE TUBE



→ Features

Waveguide size: WR2300 to WR10
 Length: Up to 3 meter
 Material: Al or Cu
 Type: Standard, Thin, Heavy wall thickness

→ Description

Dolph Microwave Waveguide Tube WR2300 to WR10 is available in standard, thin, and heavy wall thickness. The length and material can be chosen upon request.

| Model | EIA WG | IEC WG | Freq Range (Ghz) | Material |
|-------------|--------|--------|------------------|----------|
| DH-3WT... | WR2300 | R3 | 0.32-0.49 | Al |
| DH-4WT... | WR2100 | R4 | 0.35-0.53 | Al |
| DH-5WT... | WR1800 | R5 | 0.41-0.62 | Al |
| DH-6WT... | WR1500 | R6 | 0.49-0.75 | Al |
| DH-8WT... | WR1150 | R8 | 0.64-0.98 | Al |
| DH-9WT... | WR975 | R9 | 0.76-1.15 | Al |
| DH-12WT... | WR770 | R12 | 0.96-1.46 | Al |
| DH-14WT... | WR650 | R14 | 1.13-1.73 | Cu/Al |
| DH-18WT... | WR510 | R18 | 1.45-2.2 | Cu/Al |
| DH-500WT... | WR19 | R500 | 39.2-59.6 | Cu |
| DH-620WT... | WR15 | R620 | 49.8-75.8 | Cu |
| DH-740WT... | WR12 | R740 | 60.5-91.9 | Cu |
| DH-900WT... | WR10 | R900 | 73.8-112 | Cu |

| Inside Dimensions (mm) | Std Tol±Inside Dim(mm) | Nom Wall Thickness(mm) | Outside Dimensions (mm) | Std Tol±Outside Dim(mm) |
|------------------------|------------------------|------------------------|-------------------------|-------------------------|
| 584.2*292.1 | | 6 | | |
| 533.4*266.7 | | 5 | | |
| 457.2*228.6 | 0.51 | 5 | | |
| 381*190.5 | 0.38 | 3.18 | | |
| 292.1*146.05 | 0.38 | 3.18 | | |
| 247.65*123.82 | | 3.18 | | |
| 195.58*97.79 | | 3.18 | | |
| 165.1*82.55 | 0.33 | 2.03 | 169.16*86.61 | 0.2 |
| 129.54*64.77 | 0.26 | 2.03 | 133.6*68.83 | 0.2 |
| 4.775*2.388 | 0.02 | 1.015 | 6.81*4.42 | 0.05 |
| 3.795*1.88 | 0.02 | 1.015 | 5.79*3.91 | 0.05 |
| 3.0988*1.5494 | 0.0127 | 1.015 | 5.13*3.58 | 0.05 |
| 2.54*1.27 | 0.0127 | 1.015 | 4.57*3.3 | 0.05 |

| Freq of Cut-Off for TE _{1,0} Mode(GHz) | Wave-length of Cut-Off for TE _{1,0} Mode(mm) | Theoretical Attenuation lowest to highest freq (dB/100ft) | |
|---|---|---|-----------------|
| | | Al | Cu |
| 31.393 | 9.55 | | 43.603-64.367 |
| 39.499 | 7.52 | | 62.425-92.152 |
| 48.374 | 6.2 | | 83.409-123.128 |
| 59.016 | 5.08 | | 112.397-165.920 |

| Ordering Information | |
|----------------------|-----------------|
| DH - 120 WT 100 A | |
| DH | Dolph Microwave |
| 120 | WR75 |
| WT | Waveguide Tube |
| 100 | Length 100 mm |
| A | Material Al |