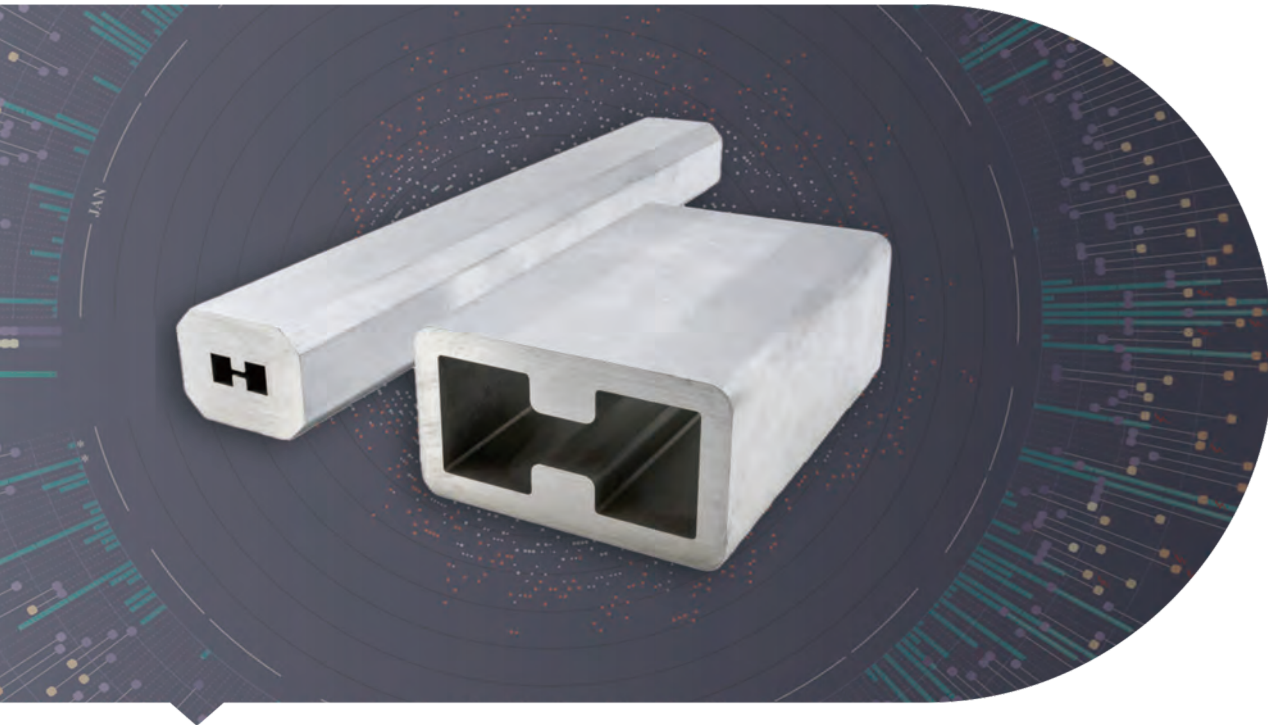


DOUBLE RIDGED WAVEGUIDE TUBE



→ Features

Waveguide size: WRD84 to WRD180

Material: Al and Cu

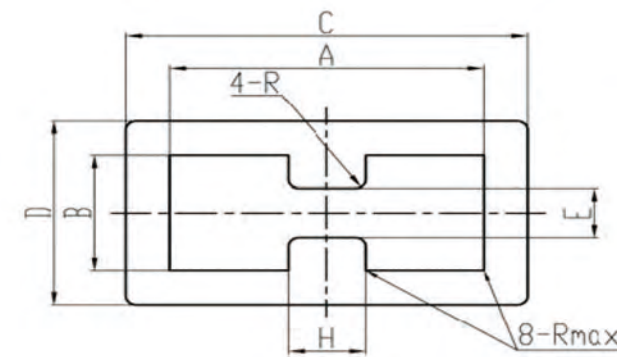
Length(mm): 50, 100, 200 or others

→ Description

Dolph Microwave Double ridged waveguide tubes can bear high power handling. Both Al and Cu material are all available. Length can be selected based on requirement. Standard and customized can be chosen in mechanical configurations.

Model	WR Type	Frequency (Ghz)	Te10	Te20	A	B	Devi.(±)
DH-200DRWT...	WRD200D24	2.0-4.8	1.666	4.925	65.79	30.61	0.1
DH-250DRWT...	WRD250D30	2.6-7.8	2.093		42.04	18.16	0.08
DH-350DRWT...	WRD350D24	3.5-8.2	2.915	8.62	37.59	17.48	0.08
DH-475DRWT...	WRD475D24	4.75-11.0	3.961	11.705	27.69	12.85	0.08
DH-500DRWT...	WRD500D36	5.0-18.0	4.222		19.1	8.2	0.08
DH-580DRWT...	WRD580D28	5.8-16.0	4.892		19.81	9.4	0.08
DH-650DRWT...	WRD650D28	6.5-18.0	5.348		18.29	8.15	0.08
DH-750DRWT...	WRD750D24	7.5-18.0	6.239	18.464	17.55	8.15	0.08
DH-700DRWT...	WRD700D26	7.0-18.0	5.679		17.42	7.87	0.08
DH-110DRWT...	WRD110C24	11.0-26.5	9.363	27.08	11.96	5.56	0.08
DH-180DRWT...	WRD180C24	18.0-40.0	14.995	44.995	7.32	3.4	0.08

E	±ΔE	Rmax	R±10%	H	±ΔH	C	D	Devi.(±)	Material
13	0.05	1.27	2.59	16.46	0.05	69.85	34.67	0.1	Al/Brass
3.81	0.05	0.51	2.34	11.18	0.05	46.1	22.22	0.1	Al/Brass
7.42	0.05	0.76	1.47	9.4	0.05	40.84	20.73	0.1	Al/Brass
5.46	0.05	0.76	1.09	6.91	0.05	30.23	15.39	0.08	Al/Brass
1.6	0.05	0.38	0.33	4.78	0.05	21.64	10.74	0.08	Al/Brass
3.05	0.05	0.38	1.09	5.08	0.05	22.35	11.94	0.08	Al/Brass
2.57	0.05	0.51	0.56	4.39	0.05	20.85	10.69	0.08	Al/Brass
3.45	0.05	0.51	0.69	4.39	0.05	20.09	10.69	0.08	Al/Brass
2.67	0.05	0.51	0.58	4.39	0.05	19.96	10.41	0.08	Al/Brass
2.36	0.05	0.38	0.48	3	0.05	14	7.59	0.08	Al/Brass
1.45	0.05	0.38	0.28	1.83	0.05	9.35	5.44	0.08	Al/Brass



Ordering Information

DH - 650DR WT 100 A

DH Dolph Microwave

650DR WRD650

WT Waveguide Tube

100 L=100mm

A Material Al